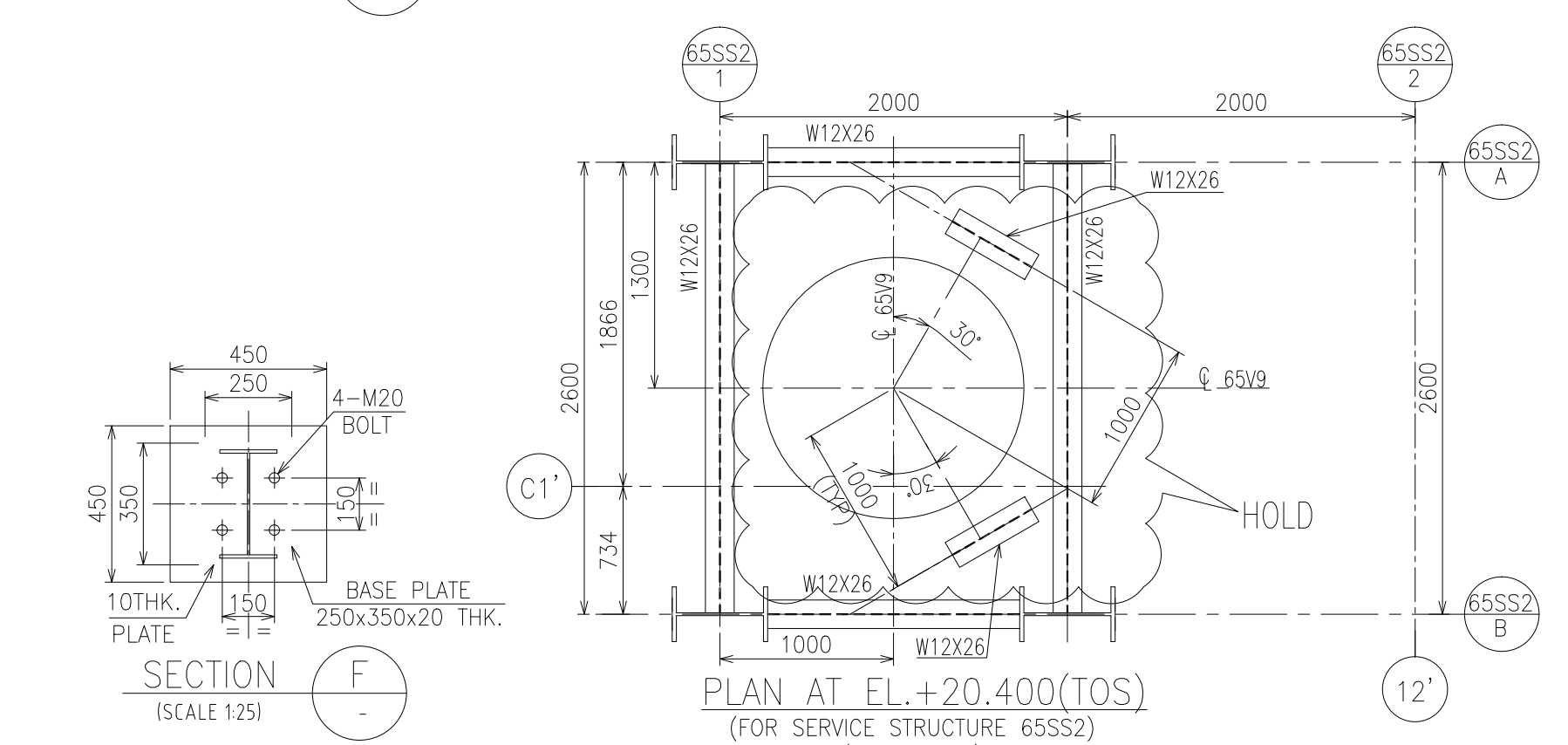
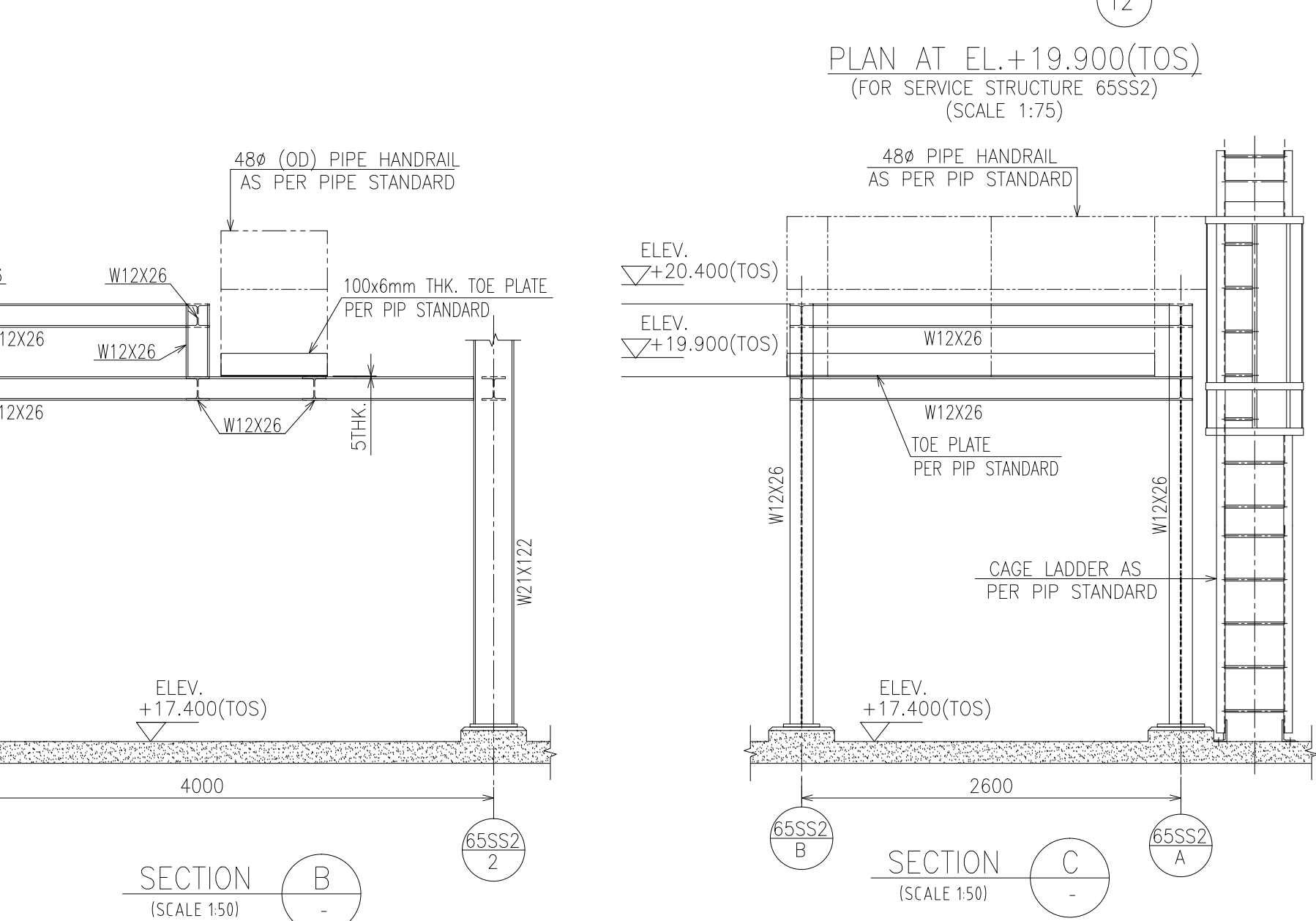
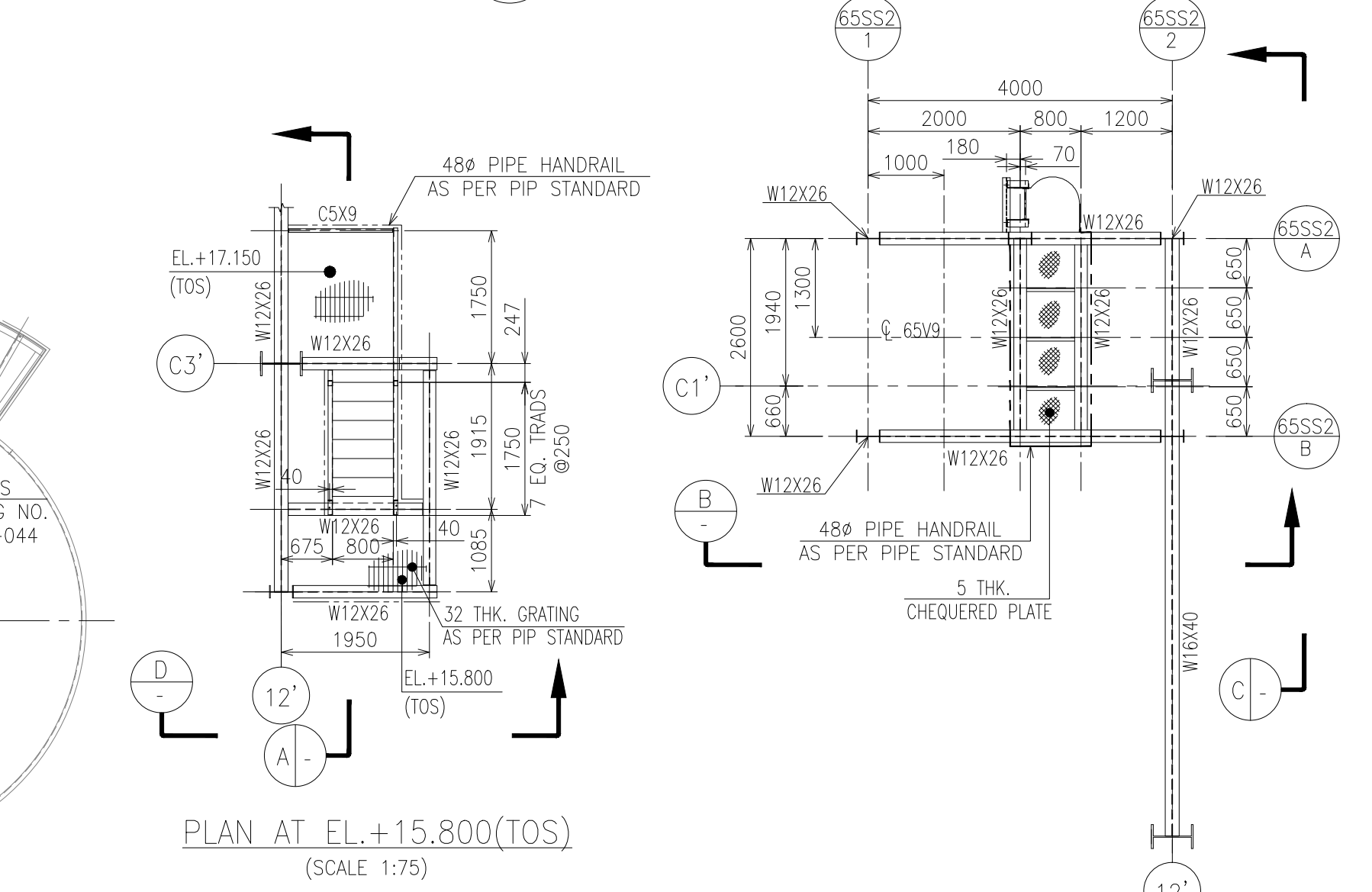
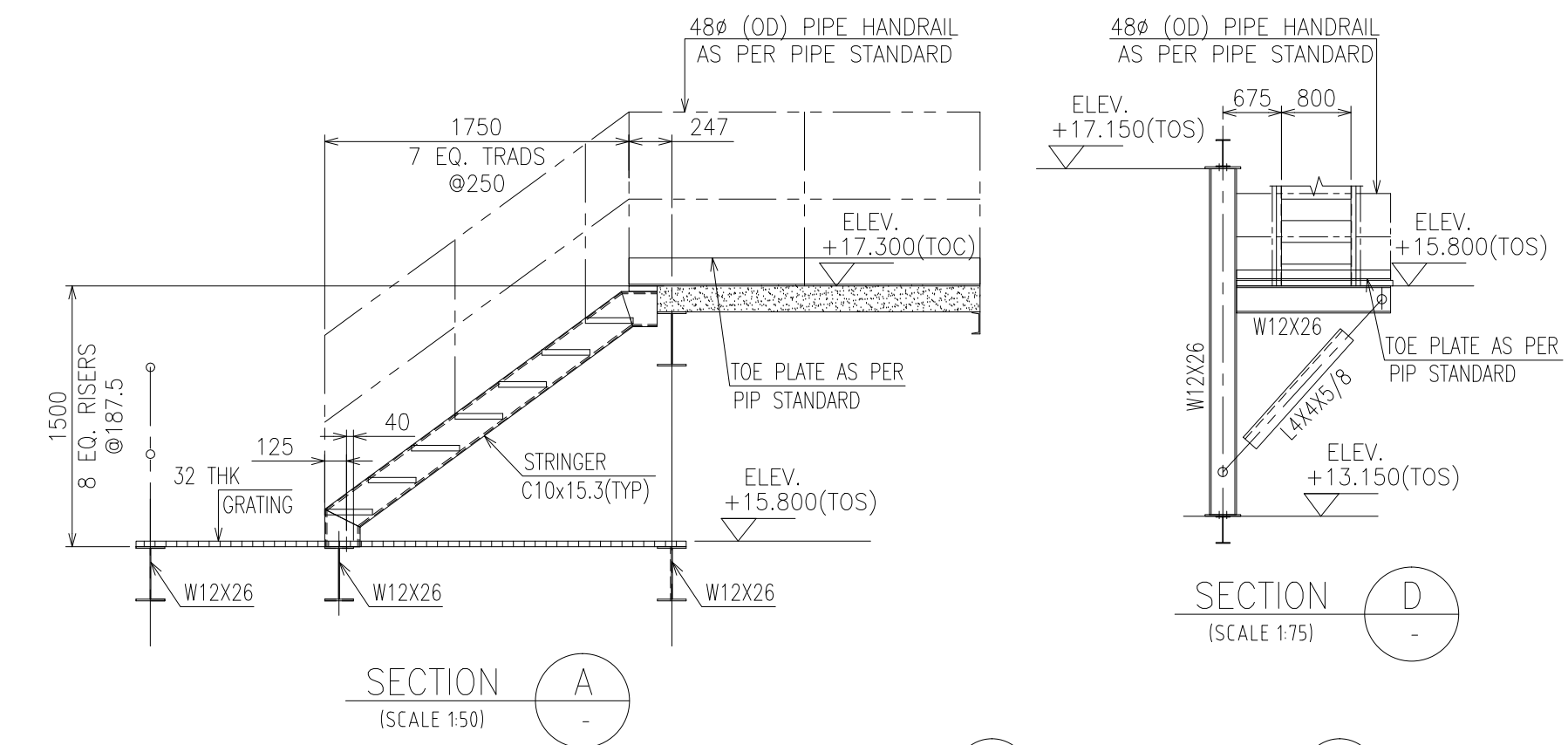
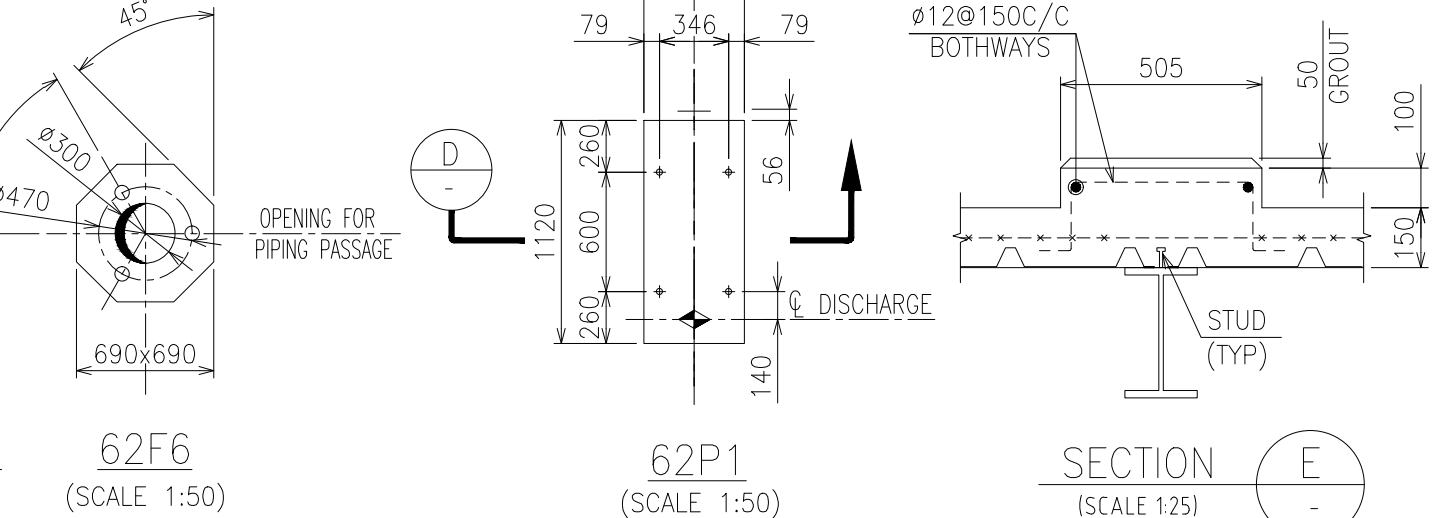
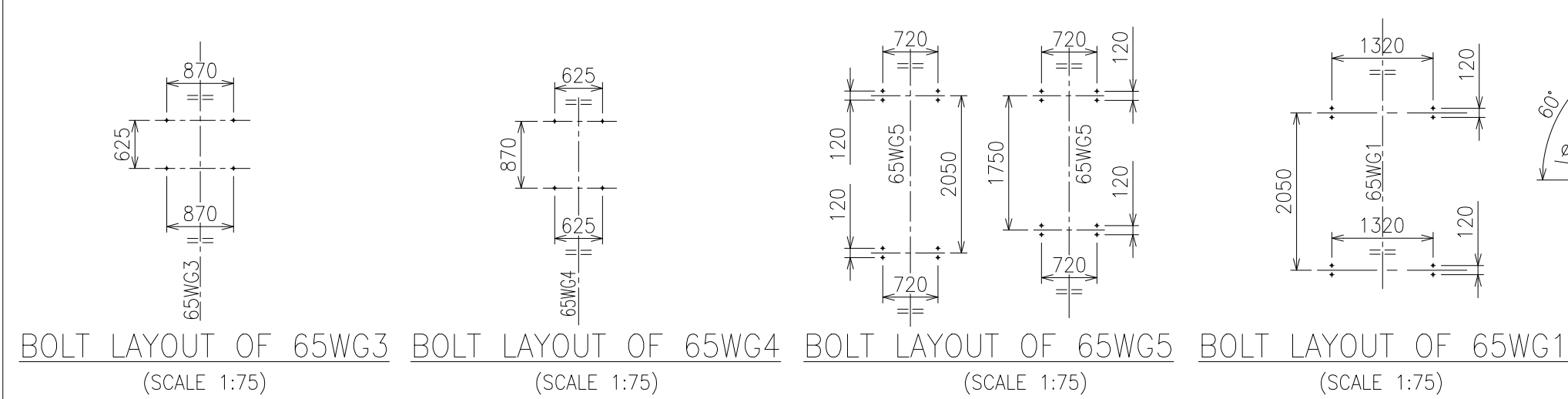
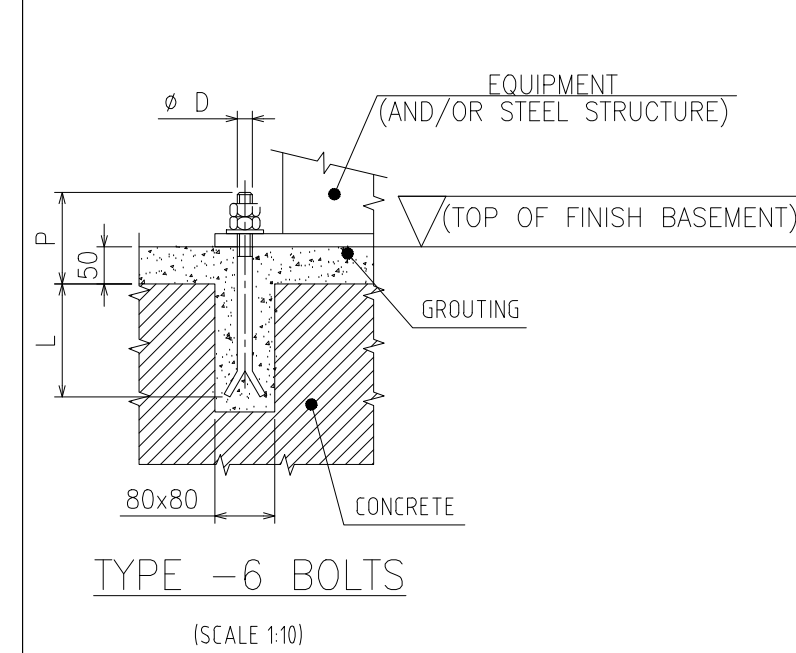
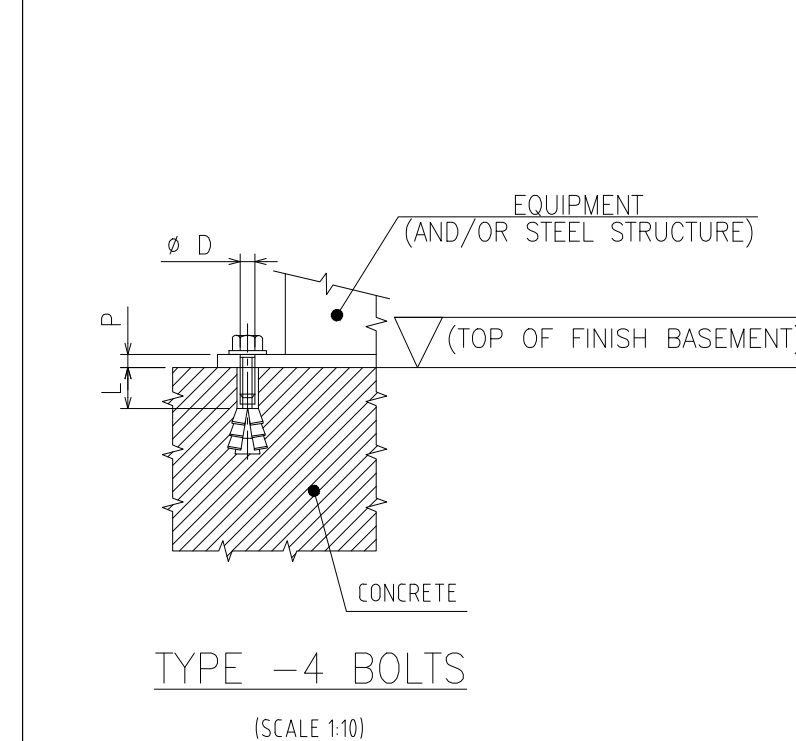


PLAN AT EL.+17.300(TOC)/EL.+17.150(TOS)  
(SCALE 1:75)



- GENERAL NOTES
1. ALL DIMENSIONS ARE IN MILLIMETRES AND LEVELS ARE IN METRES.
  2. FOR GENERAL NOTES, MATERIALS SPECIFICATION AND LEGEND REFER DRAWING NO. J8371-4-23-009
  3. FOR TYPICAL DETAIL OF METEL DECK FLOORING, DETAIL AT EDGE AND DETAIL OF OPENING REFER DRG. NO. J8371-4-23-010.
  4. FOR DETAIL OF PEDESTAL FOR 65SS2 REFER DRG. NO. J8371-4-23-011

BASE PLATE ELEVATION AND BOLT DATA									
FOUNDATION BOLT SB-ATI-SP059									
EQUIPMENT ITEM	TOP OF GROUT EL.	QTY	TYPE	DIA	P	NUTS QTY	L+P	POCKET DEPTH	
62F6	17.400	3	6	16	95	6	220	150	
62P1	17.400	4	6	12	90	8	215	150	
65WG1	17.400	8	4	12	10	8	85	—	
65WG2	17.400	8	4	12	10	—	85	—	
65WG3	17.400	4	4	HOLD	10	—	85	—	
65WG4	17.400	4	4	HOLD	10	—	85	—	
65WG5	17.400	8	4	12	10	—	85	—	
65SS2-A1	17.400	4	6	16	15	8	140	150	
65SS2-A2	17.400	4	6	16	15	8	140	150	
65SS2-B1	17.400	4	6	16	15	8	140	150	
65SS2-LADDER	17.300	2	4	16	15	—	90	—	



REFERENCE DRAWINGS	
DESCRIPTION	DRAWING NUMBER
GENERAL LAYOUT	2F78-20-101
PLOT PLAN SABIZ PLANT	2F78-20-102
CONCEPTUAL LAYOUT	2F78-20-104
EQUIPMENT LAYOUT AND LOADING DATA	2F78-55-101
SABIZ PLANT LAYOUT PLANS	J8371-4-23-009 TO 019
SABIZ PLANT ELEVATIONS	J8371-4-23-020 TO 030
SABIZ PLANT STAIRCASE DETAILS	J8371-4-23-031

03-08-15	02	REVISED AS PER CLIENT COMMENT	APG	AMA	RAR
27-07-15	01	REVISED AS PER CLIENT COMMENT	APG	AMA	RAR
19-07-15	00	ISSUED FOR APPROVAL	APG	AMA	RAR
DATE	REV	DESCRIPTION	DRN	CKD	APP

CLIENT: UNIVERSAL CHEMICAL COMPANY

**دار الرياض**  
DAR AL RIYADH  
MASDAR SYSTEMS & SOLUTIONS  
P.O. BOX 20753, AL KHOBAR 31952  
TEL: 8494-111 FAX: 849-3707 E-MAIL: masdar@daralriyadh.com

PROJECT TITLE: SYNTHETIC DETERGENT POWDER PRODUCTION PLANT  
DRAWING TITLE: SABIZ TOWER STRUCTURAL GA LAYOUT AT EL.+17.300(TOC)/EL.+17.150(TOS) AND EL.+15.800 (TOS)

BY	DATE	PROJECT NO.	REF NO.
DRN/CADD	APG	01-03052015	SCALE : 1:75
CHECKED	AMA	DRAWING NO.	J8371-4-23-013
APPROVED			REV. 02

J8371-4-23-013-R02